

JNAC Report

Blackstock - Nestleton Pastoral Charge



Blackstock United



Nestleton United

Table of Contents

	<u>Page</u>
1. Resources	
• Blackstock United Church	1
• Nestleton United Church	1
• Manse	2
• Personnel	3
• Equipment	3
2. Pastoral Charge	
• Mission Statement	4
• Community Profile	5
• Schools	5
• Health Services	5
• Other Essential Services	6
• Recreation	6
• Other local events and attractions	6
• Culture	7
• Services Clubs	7
• Services	7
3. Minister's Job Description	
• Worship	8
• Pastoral Care	8
• Christian Education	8
• Committees and Meetings	8
• Community Outreach	9
• Professional Development	9
• Presbyterial Duties	9
4. Skills	9
5. Terms	10
6. Pie Chart with percentages	11
7. Church Structure	12
8. Recommendations	13

RESOURCES

Blackstock Church

The building is a red brick structure built in 1887 which incorporates the following features:

- Bright sanctuary with wooden pews, centre aisle and two side aisles
- 12 large beautiful stained glass windows depicting the life of Jesus
- Two large windows with some stained glass in Narthex
- Chair lift accessibility to sanctuary
- Carillon with musical tapes
- Elevated choir loft

The lower church level includes a full kitchen, an office and a large carpeted area for meetings and activities. The Christian Education Centre attached serves as a multi-use community centre, comprising of approximately 1,400 square feet. This addition was built in 1959 and was recently up-graded.

In the last five years, through fundraising and memorial donations, constant improvements have been made to the church which include: a paved driveway, installation of town water, two large stained glass windows in narthex, tables, chairs and cupboards in the CE Room.

Nestleton Church

The Nestleton church is a typical country, red brick structure built in 1900. This charming facility is surrounded on two sides by a well-maintained cemetery. The church incorporates the following features:

- Sanctuary has wooden pews with two off centre aisles
- Raised choir loft
- Sanctuary recently painted
- (Non-accessible for wheel chairs)

This well maintained church includes a full basement for meetings and other activities. It is located approximately 6 km's from the manse. Upgrades include a new furnace and oil tank.

Manse

The manse is a century old, two-storey red brick building located within a five minute walk from the Blackstock church. The manse includes the following:

On main floor

- Living Room
- Dining Room
- Eat in Kitchen (refrigerator, stove, microwave supplied)
- Laundry Room (washer and dryer supplied)
- 2 piece bathroom
- Den
- Side covered deck

On upper level

- 5 Bedrooms (4 with closets)
- Full bathroom
- Sunroom

Services include municipal water and an oil furnace. A detached clapboard workshop/garage is located behind the residence. The structure is well maintained by a Manse Committee. (The frontage is 84 feet and the depth is 154 feet). Church members consider the manse the minister's private residence and respect their personal time and space.

Personnel

- Minister
- Charge secretary responsible for preparation of Sunday bulletins, annual reports, up-dating membership lists, and general duties as required
Minimum weekly hours are approximately 8
- Volunteer Charge treasurer and two local church treasurers
- One full time paid organist/choir director at Blackstock and two part time organists at Nestleton
- Each church has their own caretaker
- Blackstock has an excellent choir, while Nestleton only on rare occasions

Equipment

Blackstock

- Organ – two manual Rodgers with full pedal board and sequencer
- 3 upright pianos
- Sound system
- Photocopier
- Telephone
- Television, DVD, VCR
- Computer and fax machine could be available, if requested
- Kitchen includes fridge, stove, microwave and dishes for 100
- New matching tables & chairs housed in cupboards in CE room

Nestleton

- Hammond Organ
- 2 upright pianos
- Kitchen supplies include microwave and coffee pot

PASTORAL CHARGE

Mission Statement –

Blackstock-Nestleton Pastoral Charge consists of a group of followers of Jesus Christ, nurturing a Christian Faith Community through worship, compassionate care for one another, our community and God's global creation.

Ministry of church in our community has been the nurturing and sustaining of Christian fellowship.

We are a two point charge served by a full time minister who must divide his/her time between the Blackstock and Nestleton congregations. We are in Oshawa Presbytery, Bay of Quinte Conference.

Our Charge belongs to the Scugog Ministerial Organization which comprises of other churches in the area, namely Anglican in Blackstock, Presbyterian and Catholic in Nestleton, Pentecostal, Baptist, Christian Reform, United and Anglican in Port Perry.

Blackstock has a Church Session responsible for worship (14 people) and a Board of Stewards (12 people) responsible for maintenance and fund raising. Nestleton has a Church Council (17 people) responsible for all affairs.

We enjoy an amicable charge sharing services such as World Day of Prayer with all denominations, Remembrance Day and Christmas Carol Sing with Anglicans and summer services and Christmas Cantata with each other.

Our community has potential to develop, but presently church attendance is shrinking. Our hopes are to reverse this trend and see our attendance increase.

	Blackstock	Nestleton
Active Number of Members/Adherents	300	32
Sunday Attendance (regular service)	60- 80	15-20
Sunday School Attendance	6 – 15	5

Church groups within this charge include U.C.W., youth group, Sunday School, choir, Bible study

User Groups using our church facilities in Blackstock include yoga, Scouts, Guides, quilters, Lions Club, Women's Institute, 4-H, music teacher and local high school band.

Fund raising events held annually at Blackstock include a Beef Supper, Strawberry Supper, Choir Pork Dinner, Fair Booth and Talent Auction. Nestleton hosts an Irish Stew Supper, Yard Sale and Storyteller at Christmas. Fundraising is required to meet expenses.

Functions within our community in which the Charge participates include Senior Luncheon Dates, Food Bank, Shut in's at Christmas, needy families at Christmas. Nestleton sponsors a Foster child while Blackstock sponsors the Scout movement.

Church members are mainly comprised of long time residents, farmers and commuters who work in Oshawa, Toronto, and Markham.

The hospitality of our congregations has maintained long term relationships of approximately 7-10 years with previous ministers.

Community Profile

Blackstock and Nestleton are two villages located approximately a 10 minute rural drive apart in Ward 4 of the Township of Scugog, in the Regional Municipality of Durham. Our Ward has a population of approximately 5,000 people. This picturesque part of the Golden Horseshoe is situated near the shores of Lake Scugog and a half hour north of Lake Ontario. We are located approximately an hour's drive northeast of Toronto, with easy accessibility to Highway 401 and Highway 115.

Schools

Blackstock has a public elementary (Cartwright Central Public School) and a secondary school (Cartwright High School). The high school is well known for its academic level, instrumental band and has approximately 140 students.

School bus transportation is available to Elementary French Immersion and Gifted programs at R. H. Cornish Public School in Port Perry. High school students also have the option of attending Port Perry High School, which offers a full range of academic, technical and sports programs.

There are also Separate (Roman Catholic) and Christian elementary and secondary schools in the area.

Post secondary options include University of Ontario Institute of Technology and Durham College located in Oshawa approximately 25 kms from Blackstock. Trent University, Fleming College, York University and the University of Toronto (among others) are within commuting distance.

Health Services

Lakeridge Health Port Perry (10 kms)

- Full Emergency, Maternity, Surgical and Medical services

Lakeridge Health Bowmanville (25 kms)

- Full Emergency, Coronary care, Surgical and Medical services

Lakeridge Health Oshawa (30 kms)

- Full service hospital and the new Durham Regional Cancer Care Centre

Port Perry Medical Associates (10 kms)

- Large family practice clinic with 24 doctors
- Physiotherapy, audiology, lab services, x-ray/ultrasound and pharmacy

Other Essential Services

- Three dental offices
- Optometrists
- Several pharmacies
- Nursing Home and Retirement Centers in Port Perry
- Community Care for seniors (meals on wheels, etc.)
- Home Care under Community Care Access Centre
- Massage Therapy/Acupuncturist

Recreation

Cartwright Fields, Nestleton

- Soccer
- Baseball
- Hiking trails

Blackstock Arena

- hockey
- figure skating
- curling
- public skating
- shuffleboard (summer)
- outdoor skateboard park

Other Local Events and Attractions

- Weekly euchre parties
- 4-H Clubs
- Guiding and Scouting programs
- Access to Ontario Federation Snowmobile Trails
- 10 to 20 minute drive to 5 ski resorts (downhill and cross-country)
- Mountain bike trails
- Mosport speedway
- Lake Scugog – fishing summer and winter
- Tennis courts in Port Perry
- Two full-size ice pads in Port Perry
- Enniskillen and Long Sault conservation areas
- Numerous world-class golf courses
- Great Blue Heron Charity Casino
- Blackstock Agricultural Fair
- Tractor Pull
- Demolition Derby

Culture

Port Perry Memorial Library and Kent Farndale Art Gallery

Scugog Shores Museum

Town Hall 1873 (Port Perry)

- Professional Concert Series
- Theatre Presentations
- Borelians
- Scugog Choral Society

Service Clubs

- Lions Club
- Women's Institute
- Agricultural Society (Blackstock Agricultural Fair 4th weekend in August)
- Pineridge Garden Club

Services

- Two variety stores
- Post Office
- Pizzeria
- LCBO
- Two gas stations
- Local Car Repair Centers
- High Speed Internet
- Three large grocery stores in Port Perry
- Other major department stores located within a 20-30 minute drive (hardware store, paint store, restaurants, clothing stores, shoe store, CIBC, Royal Bank)

Minister's Job Description

The minister is our spiritual leader and we anticipate he or she will guide us through our journey as a congregation into the future.

Work to be done (refer to attached pie chart)

1. Worship

- This person will blend a Sunday morning worship service with a balance of contemporary and traditional style, using current affairs in a meaningful message to enlighten, enrich and entertain
- Provide leadership in making our Worship Committee an effective and viable part of our church
- Participate in Special services such as baptisms, confirmations, Easter, Christmas, Remembrance Day

2. Pastoral Care

- Provide leadership in developing and empowering a Pastoral Care Committee to provide effective Pastoral care and visitation of hospital patients, shut-ins and those in nursing homes. Genuine concern for our members in time of need or crisis is of utmost importance.
- Provide pastoral care and guidance to members of our congregation in times of need or crisis
- Schedule office hours for drop in visits at the Church (approx. 2 hours twice a week)

3. Christian Education

- Enhance spiritual growth.
- Work with the congregations to form a Christian Education committee to help organize learning opportunities for all age groups.
- Provide active support and be a team player for the Sunday School, Youth Group and their leaders.

4. Committees and Meetings

- Attend all local pastoral charge committee meetings

5. **Community Outreach**

- Be part of the Scugog Ministerial Committee, a multi-denominational group of ministers who attend monthly meetings, share in celebrations and worship at our local nursing homes
- Participate in fellowship at social functions of the pastoral charge

6. **Professional Development**

- We encourage our new minister to take advantage of opportunities to enhance their personal growth through education and workshops
- We promote involvement with the local lectionary discussion group

7. **Presbyterial Duties**

- The appropriate presbyterial relationship and duties would be expected

Skills

- Strong speaking voice
- Communicate ideas clearly and concisely
- Good sense of humour
- Leadership skills and ability to inspire all age groups
- Compassionate and caring
- Good listener
- Well organized
- Ability to make people laugh and keep people's interest

Terms

Salary in accordance with United Church of Canada guidelines

A manse is provided, located in Blackstock, and is well maintained through the guidance and efforts of the Pastoral Charge Manse Committee. Utility costs of electricity, heating, water, high speed internet and basic phone service are included.

Travel expenses as per United Church of Canada guidelines.

Moving expenses based on reasonable estimates and receipts will be paid.

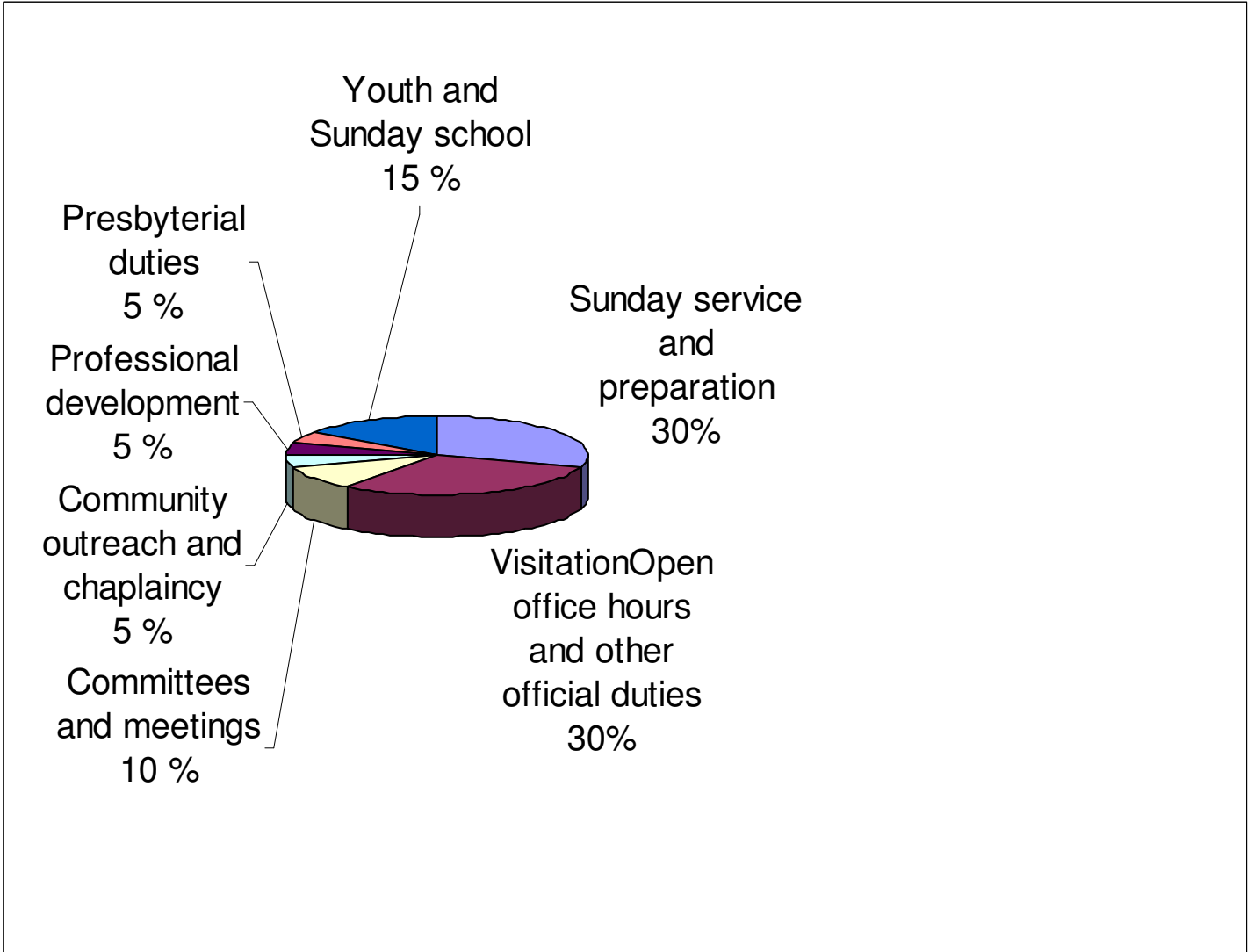
Continuing Education and Learning Resources allowance in accordance with United Church guidelines

Vacation of 5 weeks within the pastoral year with vacation and study leave requiring the approval of the Pastoral Charge Ministry and Personnel Committee.

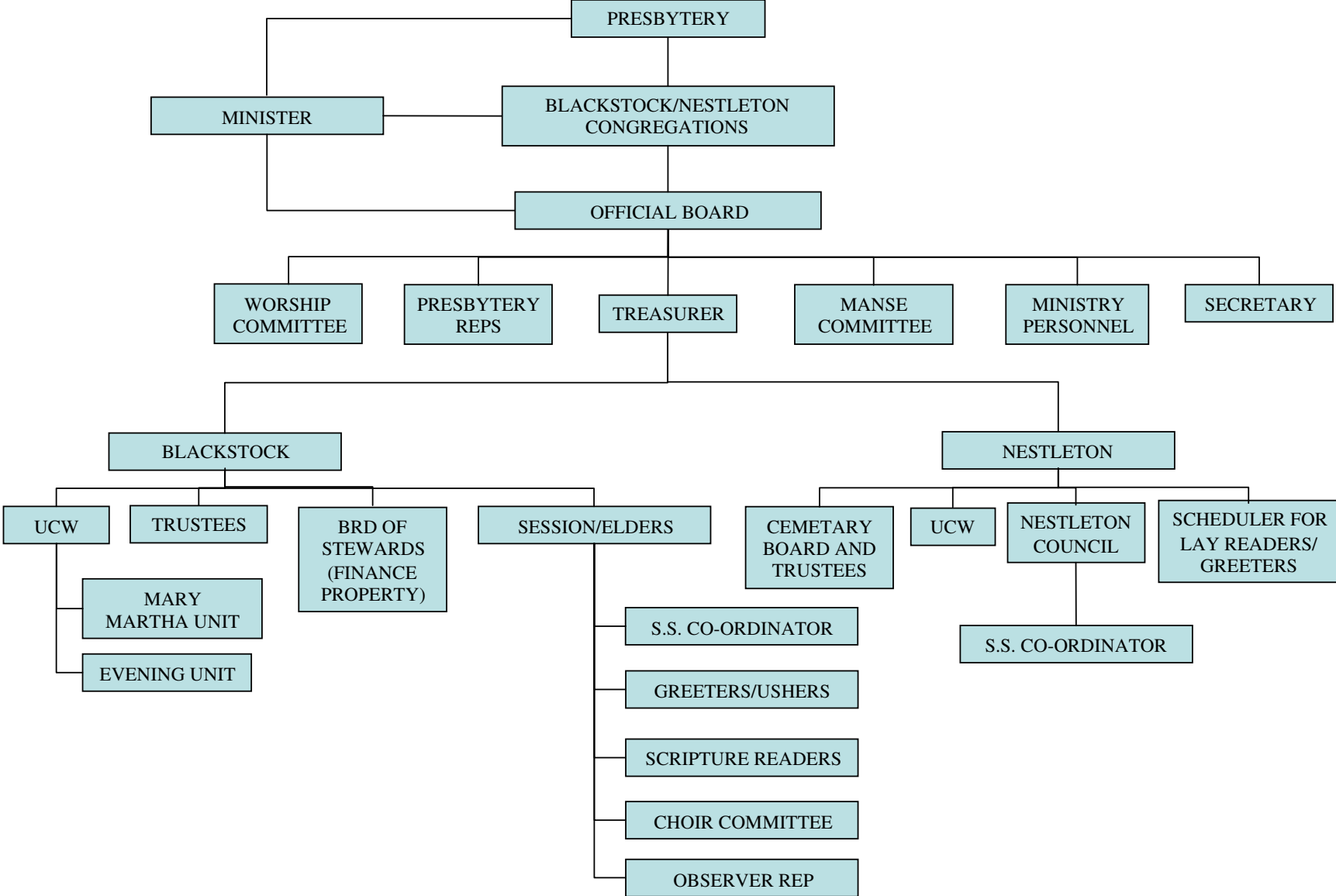
Fees or honorariums are presently in place as guidelines at each church and can be amended with consultation with the Pastoral Charge.

Minister will work along with the Ministry and Personnel Committee to ensure congregation expectations are being met.

All other requirements as set out by the Manual and the annual Salary and Allowance Schedules. All of the above terms are negotiable.



CHURCH STRUCTURE



Recommendations

These recommendations were developed as a result of the congregation/community survey completed in Spring 2008.

1. Declare a vacancy and hire a full-time ordained minister
2. Preference of the minister residing in the manse
3. Revitalize Worship Committee
4. Develop and Empower a Pastoral Care Committee
5. Form a Christian Education Committee to generate learning opportunities for all ages
6. Incorporate a variety of contemporary and traditional styles into Sunday service
7. Church website be developed and committee to manage site
8. Office hours for pastoral care by minister